

# PM-60

## Pulse Oximeter

### Technical Specifications

<b>Safety</b> Meet the requirements of IEC60601 series, CE marking according to MDD93/42/EEC	
Type of Protection	Class II with internal electric power supply
Degree of Protection	BF (defibrillation proof)
Protection Against Ingress of Liquid:	IPX2
<b>Dimension and Weight</b>	
Dimension	55(W)X120(H)X30(D)mm
Weight	Maximum weight 300g (With battery)
<b>Operation Environment</b>	
Temperature	0~40℃
Humidity	15~95%(non-condensing)
<b>Storage Environment</b>	
Temperature	-20℃ ~ +60℃
Humidity	10% ~ 95% (Non-condensing)
<b>Performance Specifications</b>	
Display	2.4" color TFT
Resolution	320×240
Multi displays selectable	Standard screen display Waveform display
Trace	1 plethysmogram waveform
Indicator	Alarm indicator light Power indicator light Pulse tone Alarm sound Button tones
Interface	One dual-purpose socket for connecting SpO2 sensor and communication cable.
IR interface	Infrared link allows downloading realtime patient data to computer
DC Power interface	Charger stand for Li-ion battery
DC Power Requirements	Input voltage 5V DC Power 1.2A

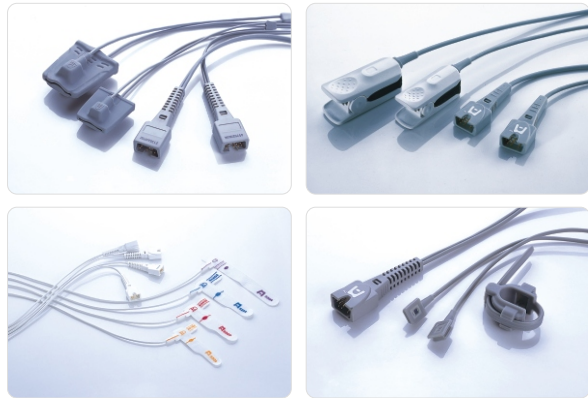
### Order Information

Part Number	Description
0852B-01000	Main unit (with standard reusable sensor)
0852-10-77701	Carrying case
0852-21-77412-53	Protective cover
0852-30-77503	Battery charging kit (Euro)
0852-30-77504	Battery charging kit (US)
0852-30-77505	Battery charging kit (UK)
0852-30-77531	Pole mounting kit
0852-30-77491	Data management kit

Partial list of choices, for more details please refer to the price list.

Battery	<i>Li-ion Battery</i> 2 hours for charging;24 hours for continuous working
	<i>AA batteries</i> (for 3 pieces)36 hours for continuous working
Trend memory	<i>Monitoring mode</i> Resolution: 2s Maximum time: 96h
	<i>Spot-Check mode</i> Review of up to 4,000 data; measure up to 99 patients
Alarm	User-adjustable High and Low limits 3-level audible and visual alarm
<b>SpO2</b>	
Measurement range	0~100%
Resolution	1%
Accuracy	±2%(70~100%,Adult/Pediatric) ±3%(70~100%,Neonate) 0~69% unspecified
Alarm range	50~100%
Refreshing rate	1 s
Averaging time	7 s (Sensitivity set HIGH) 9 s (Sensitivity set MED) 11 s (Sensitivity set LOW)
<b>Pulse Rate</b>	
Range	18~300bpm
Resolution	1bpm
Accuracy	±3bpm(non-motion) ±5bpm(motion)
Alarm range	18~300bpm
Refreshing rate	1 s
Averaging time	7 s (Sensitivity set HIGH) 9 s (Sensitivity set MED) 11 s (Sensitivity set LOW)

### Selectable Sensors



# PM-60

## Pulse Oximeter

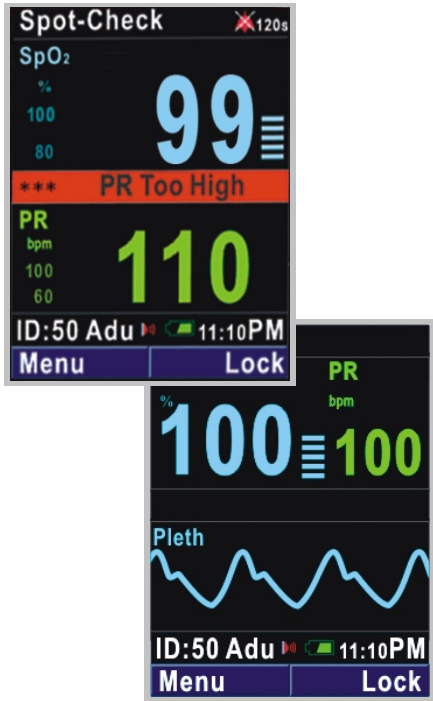


DISTRIBUTOR:



PM-60  
Pulse Oximeter

Parameters: SpO<sub>2</sub>, PR

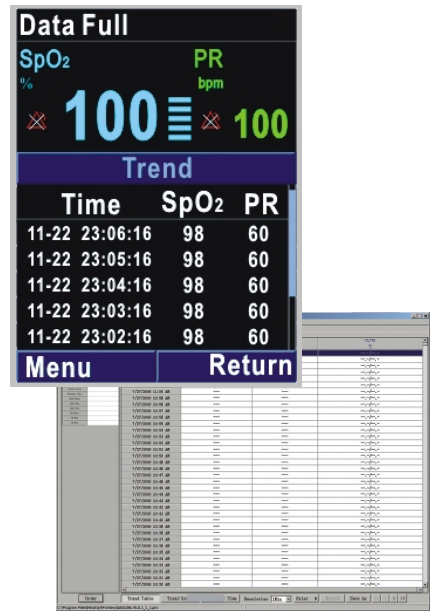


Spot Check Mode

- Auto-standby and power off during the idle status
- Auto-increase the patient IDs
- Non-alarm setting for "sensor off" occasion

Continuous Monitoring Mode

- Regular alarm handling
- Enable to input patient ID manually
- View SpO<sub>2</sub> waveform



Data Storage and Management Functions

- For you to easily keep and view patient data.
- Spot check: 1~99 IDs with total 4000 sets of measurement
  - Continuous monitoring: maximum 96 hour trend

All data can be transferred to a PC through a Windows-based software for review and regular printing.

- Suitable for adult, pediatric and neonatal patients
- High resolution 2.4" color LCD display
- Two selectable working modes: spot check and continuous monitoring
- Adjustable audible and visual alarms
- Real time data transfer by infrared technology
- Batteries to support up to 36 hour continuous working
- Protective cover and carrying case perfect for portable monitoring needs



Protective Cover



Carrying Case



Charger Stand